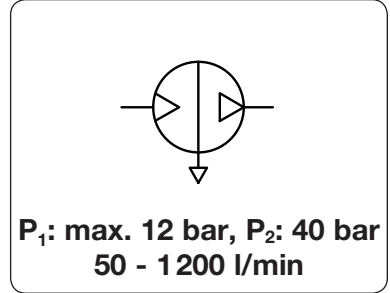


Description	The air amplifier compresses air or nitrogen from a standard pressure of 10 bar max. to the desired outlet pressure of 60 bar max. This is realised by cylinders with different ratios - simple, safe and economical. No electrical installation is required and there is no energy consumption once the final pressure has been reached. Service life 3 million cycles, full load operation 12 min max. per hour.		
Media	lubricated, unlubricated and 50 µm filtered compressed air		
Amplifier station	The pressure booster has an additional tank, pressure regulator, filter, gauge, relief valve and switch-on valve. Pressure pulsation rates are low, air consumption peaks are compensated and the operating pressure can be adjusted.		
Drive pressure P_A	system air to drive the air amplifier, 2...10 bar		
Supply pressure P₁	max. 12 bar, for instance nitrogen or the system air		
Outlet pressure P₂	amplified outlet or operating pressure of 20 bar to 40 bar maximum		
Temperature range	0 °C to 60 °C / 32 °F to 140 °F		Sound level max. 79 dB (A)
Material	Body: aluminium	Seals: NBR/Buna-N	Tank: coated steel, SST at AP40-0050



Dimensions			Weight	Tank	Connection	Transmission	Flow	P ₂	Order
A	B	C	kg	volume	thread	ratio	rate	max.	number
mm	mm	mm		l	drive	P ₁ / P ₂	P _A : P ₂	bar ⁵	

Air amplifier station									supply pressure P ₁ max. 12 bar, for compressed air	AP
									drive pressure P _A 2...10 bar	
220	400	360	13	3	G ³ / ₈	G ³ / ₈	1 : 2	580 ^{*1}	20	AP20-0580
235	400	360	16	3	G ¹ / ₂	G ¹ / ₂	1 : 2	960 ^{*1}	20	AP20-0960
656	844	381	49	40	G ³ / ₈	G ¹ / ₂	1 : 2	1200 ^{*1}	20	AP20-1200
655	844	381	58	40	G ¹ / ₂	G ¹ / ₂	1 : 3	230 ^{*2}	20	AP20-0230
365	400	133	5,3	0,8	G ³ / ₈	G ³ / ₈	1 : 4	50 ^{*3}	40	AP40-0050
655	844	381	45	40	G ¹ / ₂	G ³ / ₈	1 : 5	360 ^{*4}	40	AP40-0360



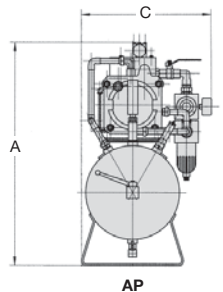
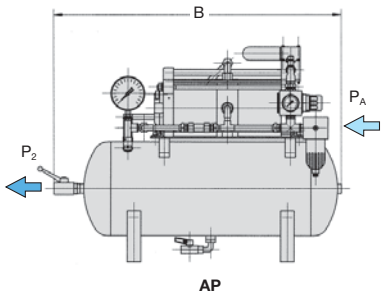
AP20-0580 similar AP20-0960 and AP40-0360



AP20-1200 similar AP40-0360 and AP20-0230

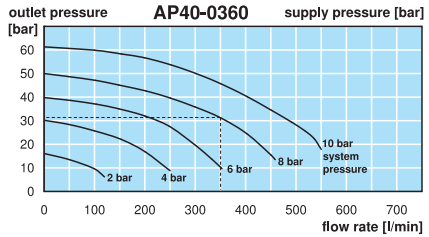
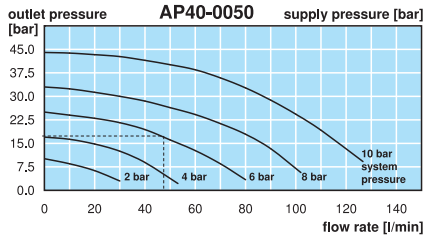
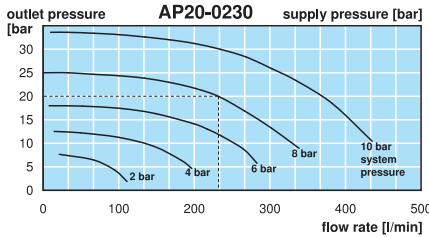
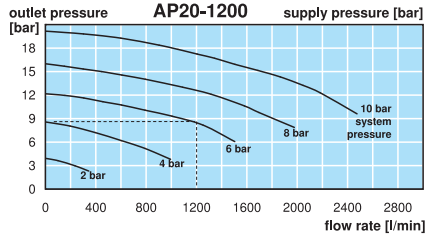
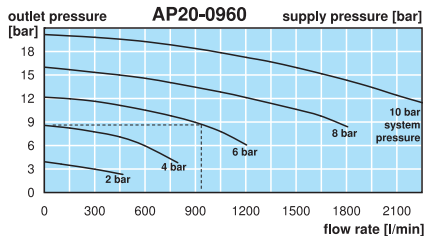
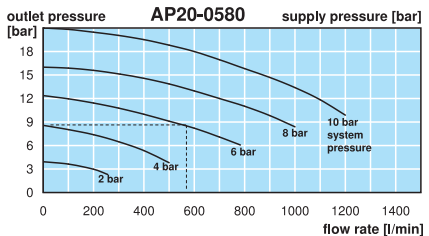
Special options, add the appropriate letter

- unlubricated operation seals** FEC seals for dry compressed air or nitrogen AP...T
- Atex** e.g. Ex II 3G/3D IIB x, further specifications possible AP...EX
- pressure booster for gasbis** P₂ max. 1500 bar AP...5



AP40-0050

Performance diagrams for full load operations, max. 12 min/h. 20% of the values at permanent running



*1 at 6 bar supply and 8 bar outlet pressure under full load
 *2 at 8 bar supply and 20 bar outlet pressure under full load
 *3 at 6 bar supply and 16 bar outlet pressure under full load
 *4 at 8 bar supply and 30 bar outlet pressure under full load
 *5 outlet pressure P₂ limited by the pressure stage of the accumulator, higher pressure ranges on request

Calculation examples can be found in the appendix www.aircom.net

Order example: AP20-0580