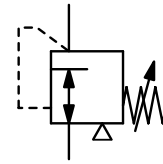


<b>Description</b>	When these valves reach a certain precalibrated vacuum degree, they introduce atmospheric air into the circuit to prevent the increase of the set value and keep it constant.	
<b>Application</b>	They are used as safety valves on non-commissioned tanks or containers at high vacuum level and on vacuum cup lifting systems.	
<b>Media</b>	compressed air or non-corrosive gases	
<b>Adjustment</b>	V04: by rotating the knurled bush in both directions V05: by knurled head screw or adjusting knob on spindle with fine thread	
<b>Mounting position</b>	any	
<b>Temperature range</b>	-20 °C to 80 °C / -4 °F to 176 °F	
<b>Material</b>	Body: nickel-plated brass Elastomer: NBR/Buna-N	Inner valve: spring steel and brass



**G<sup>1</sup>/<sub>8</sub> up to G1**  
**vacuum -1 ... 0 bar**

Dimensions			Flow rate		Connection thread	Vacuum-range	Order number
A	B	SW	m³/h	l/min	G	bar	
mm	mm	mm					

Vacuum adjustment valve						Vacuum regulator with external leakage	V04
45	7	12	4	60	G <sup>1</sup> / <sub>8</sub>	-1 ... -0.3	V04-01
57	15	24	20	330	G <sup>1</sup> / <sub>2</sub>	-1 ... -0.3	V04-04
60	12	30	40	660	G <sup>3</sup> / <sub>4</sub>	-1 ... -0.3	V04-06
65	12	35	70	1100	G1	-1 ... -0.3	V04-08



V04-01

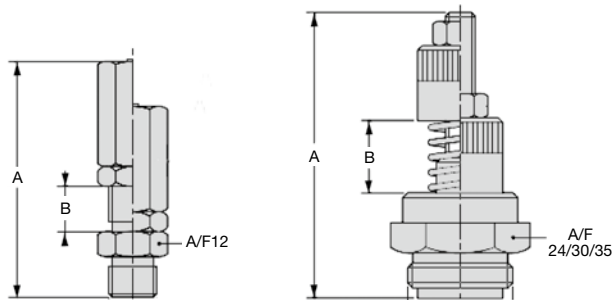
V04-04

Vacuum adjustment valve, precise						Vacuum regulator with external leakage	V05
63	26	25	4	260	G <sup>1</sup> / <sub>4</sub>	-1 ... 0	V05-02
82	52	32	20	700	G1	-1 ... 0	V05-08



V04-06

V04-08



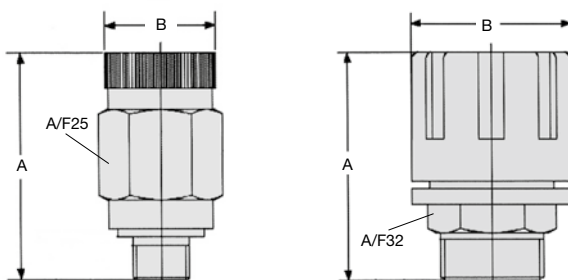
V04-01

V04-04 / -06 / -08



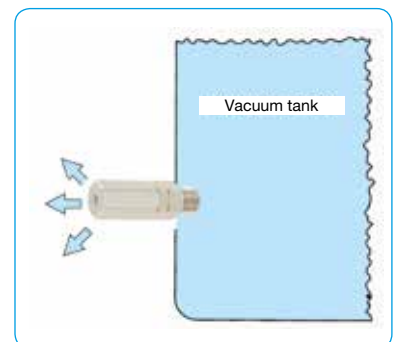
V05-02

V05-08



V05-02

V05-08



Vacuum tank

