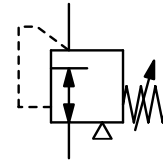


<b>Description</b>	High precision diaphragm vacuum regulator with high flow capacity. A balanced vacuum valve minimizes the effects of variation.		
<b>Media</b>	compressed air or non-corrosive gases		
<b>Accuracy</b>	response sensitivity: < 2 mbar		
<b>Adjustment</b>	by handwheel with locknut		
<b>Gauge port</b>	G¼ on both sides of the body, screw plugs supplied		
<b>Mounting position</b>	any		
<b>Temperature range</b>	0 °C to 90 °C / 32 °F to 194 °F for appropriately conditioned compressed air down to -40 °C / -40°F		
<b>Material</b>	Body: aluminium die-cast Elastomer: NBR/Buna-N, optionally FKM Inner valve: stainless steel, brass, aluminium and steel		



**G¼ up to G½**  
**-170 / -500 / -990 ... 0 mbar**

Dimensions			K <sub>v</sub> - value	Flow rate		Connection thread	Pressure range	Order number
A	B	C		m³/h*1	l/min*1			
mm	mm	mm	(m³/h)			G	mbar	

Precision vacuum regulator							supply pressure max. -1000 mbar, without constant bleed	V170
67	152	25	1.1	20	330	G¼	-170 ... 0	V170-02A
							-500 ... 0	V170-02B
							-990 ... 0	V170-02C
67	152	25	1.1	20	330	G¾	-170 ... 0	V170-03A
							-500 ... 0	V170-03B
							-990 ... 0	V170-03C
67	152	25	1.1	20	330	G½	-170 ... 0	V170-04A
							-500 ... 0	V170-04B
							-990 ... 0	V170-04C



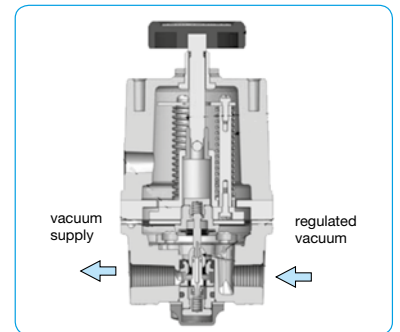
V170

## Special options, add the appropriate letter

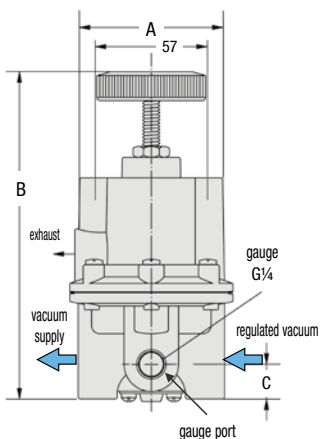
<b>NPT</b>	connection thread	V170-0..N
<b>Verstellsicherung</b>	made of aluminium, adjustment by screwdriver, total height 160 mm	V170-0..T
<b>FKM-Elastomere</b>		V170-0..V

## Accessories, enclosed

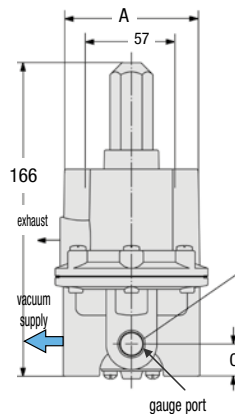
<b>pressure gauge</b>	Ø 63 mm, 0 bar down to -1bar, G¼	MA6302-00
<b>mounting bracket</b>	made of steel	BW00-34



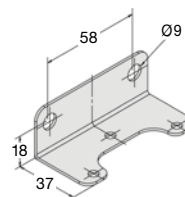
cross-section



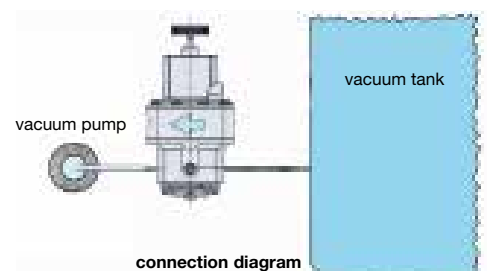
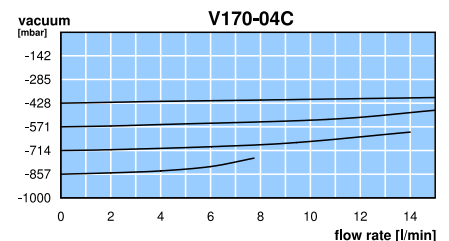
V170



with tamper  
proof cap



BW00-34



connection diagram

