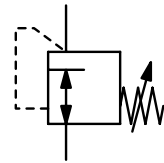


Description	Highly sensitive diaphragm pressure regulator.		
Media	compressed air or non-corrosive gases		
Supply pressure	max. 20 bar depending on the accuracy range	AR: the smaller P ₁ the higher the accuracy, min. 1 bar	
	max. 10 bar at pressure range < 120 mbar		
Accuracy	at maximum volume flow	< e.g. 10% FS pressure deviation	
Air consumption	without constant bleed		
Adjustment	manual by turning the spindle under the cover of the spring cage		
Relieving function	non-relieving, optionally relieving		
Relief capacity	Can be adjusted independently of outlet pressure. On non-relieving designs: blocked exhaust valve.		
Gauge port	not available		
Temperature range	-20 °C to 60 °C / -4 °F to 140 °F		
Material	Body: SG cast iron GGG50, GGG40 at DN50 Spring cage: aluminium	Elastomer: NBR/Buna-N, optionally FKM Inner valve: brass and stainless steel	
	Mounting position	any	



**G1 up to flange DN50
15...20/4400 mbar**

Dimensions			Accuracy	Nominal size	Flow rate	P ₁ max.	Connection thread	Pressure range	Order number
A	B	C	%	DN	l/min*1	bar*2	G	mbar	
mm	mm	mm							

Low press. regulator w. positioning spring

P₁: max. 20 bar, non-relieving

RZ

185	245	30	10	17	1800	10	G1	15 ... 20	RZ1-08A
			10		1800	10		20 ... 30	RZ1-08B
			10		1800	10		30 ... 40	RZ1-08C
			10		1800	10		40 ... 70	RZ1-08D
			10		1800	10		70 ... 110	RZ1-08E
			10		3300	16/20		110 ... 180	RZ2-08F
			10		3300	16/20		180 ... 300	RZ2-08G
			5		4100	16/20		300 ... 700	RZ3-08H
185	245	30	10	17	2700	10	G1½*3	15 ... 20	RZ1-12A
			10		2700	10		20 ... 30	RZ1-12B
			10		2700	10		30 ... 40	RZ1-12C
			10		2700	10		40 ... 70	RZ1-12D
			10		2700	10		70 ... 110	RZ1-12E
			10		5000	16/20		110 ... 180	RZ2-12F
			10		5000	16/20		180 ... 300	RZ2-12G
			5		5000	16/20		300 ... 700	RZ3-12H
254	460	80	5	22	15000	10	flange	10 ... 18	RZ1-16AF
			5		15000	10	DN50	15 ... 30	RZ1-16BF
			5		15000	10		25 ... 49	RZ1-16CF
			5		25000	10		40 ... 75	RZ1-16DF
			5		25000	10		62 ... 120	RZ1-16EF
			5		25000	10		100 ... 170	RZ1-16FF
			5		25000	20		145 ... 270	RZ1-16GF
			5		25000	20		230 ... 350	RZ1-16HF
			5	34	28000	20		280 ... 720	RZ2-16IF
			5		28000	20		840 ... 1250	RZ2-16KF



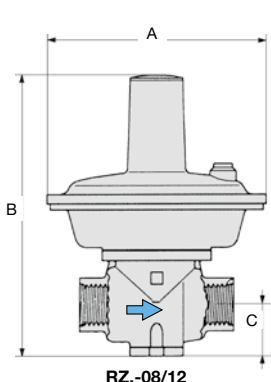
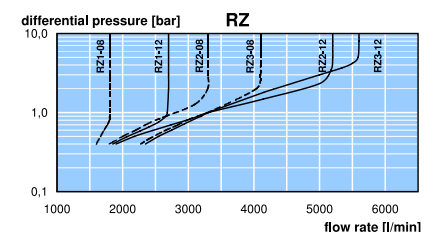
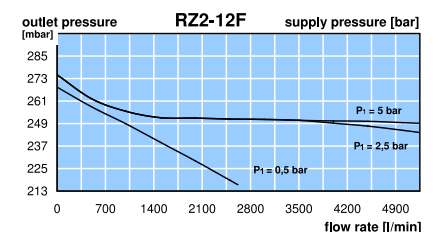
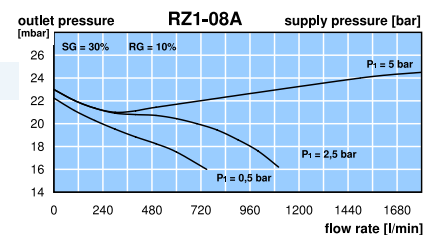
RZ2-08F



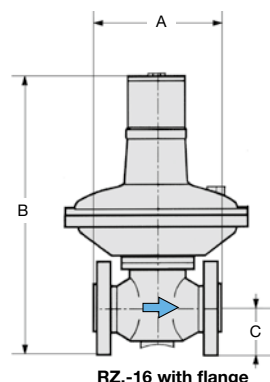
RZ1-16AF

Special options, add the appropriate letter

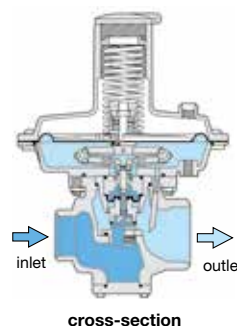
further ranges	RZ3-08 / -12	700 ... 1100	I	1100 ... 2000	J	2000 ... 3000	RZ3-...K
further ranges	RZ2-16	1050 ... 2300	L			2000 ... 4400	RZ3-16M
relieving							RZ-...R
FKM elastomer							RZ-...V
flange connection	see chapter for stainless steel devices / flanges						RZ-...F
nitrogen	N ₂ : 07	carbon dioxide	CO ₂ : 03	argon	Ar: RZ-...05		
helium	He: 09	hydrogen	H ₂ : 11	methane	CH ₄ : RZ-...13		
oxygen	O ₂ : 15 (max. 16 bar)	propane	C ₃ H ₈ : 16	nitrous oxide	N ₂ O: RZ-...17		



RZ-08/12



RZ-16 with flange



cross-section

*1 at 4 bar supply pressure and max. outlet pressure

*2 see description above

*3 G1 thread at inlet

PDF CAD
www.aircom.net



Order example:
RZ1-08A