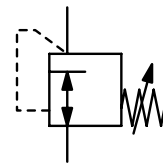


Description	Highly sensitive low pressure regulator with inlet pressure compensation for high precision regulation. Zero shut-off prevents outlet pressure from increasing.		
Media	compressed air or non-corrosive gases		
Supply pressure	max. 4 bar		
Air consumption	without constant bleed		
Adjustment	manual by turning the spindle under the cover of the spring cage		
Relieving function	non-relieving		
Accuracy	max. 20% pressure drop at full flow		
Gauge port	none as standard, optionally gauge port G $\frac{1}{4}$ on one side at R $\frac{1}{2}$ " and R1", standard G $\frac{1}{4}$ at R1 $\frac{1}{2}$ "		
Mounting position	any, preferably bonnet upwards		
Temperature range	-15 °C to 60 °C / 5 °F to 140 °F		
Material	Body: aluminium	Inner valve: aluminium and plastic	
	Elastomer: NBR/Buna-N		



R $\frac{1}{2}$ " up to R1 $\frac{1}{2}$ "
5 ... 12/350 mbar

Dimensions			Nominal size	K _v -value	Flow rate		Connection thread	Pressure range	Order number
A	B	C	DN	(m ³ /h)	m ³ /h*1	l/min*1	R	mbar	
mm	mm	mm							

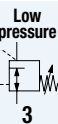
Low pressure regulator					supply pressure max. 4 bar, non-relieving			RGB4	
132	174	24	15	0.62	42	700	½"	5 ... 12	RGB4-04A
								10 ... 30	RGB4-04C
								25 ... 45	RGB4-04D
								40 ... 60	RGB4-04E
								55 ... 75	RGB4-04F
								70 ... 90	RGB4-04G
								85 ... 105	RGB4-04H
								100 ... 160	RGB4-04I
								150 ... 230	RGB4-04K
220 ... 350	RGB4-04L								
190	230	33	25	2.5	168	2800	1"	5 ... 12	RGB4-08A
								10 ... 30	RGB4-08C
								25 ... 45	RGB4-08D
								40 ... 60	RGB4-08E
								55 ... 75	RGB4-08F
								70 ... 90	RGB4-08G
								85 ... 105	RGB4-08H
								100 ... 160	RGB4-08I
								150 ... 230	RGB4-08K
220 ... 350	RGB4-08L								
190	265	55	40	5	336	5600	1½"	5 ... 12	RGB4-12A
								10 ... 30	RGB4-12C
								25 ... 45	RGB4-12D
								40 ... 60	RGB4-12E
								55 ... 75	RGB4-12F
								70 ... 90	RGB4-12G
								85 ... 105	RGB4-12H
								100 ... 160	RGB4-12I
								150 ... 230	RGB4-12K
220 ... 350	RGB4-12L								



RGB4-04CM



RGB4-12CM
accessory: gauge

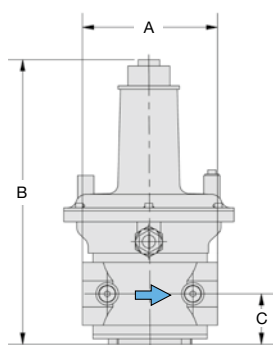


Special options, add the appropriate letter

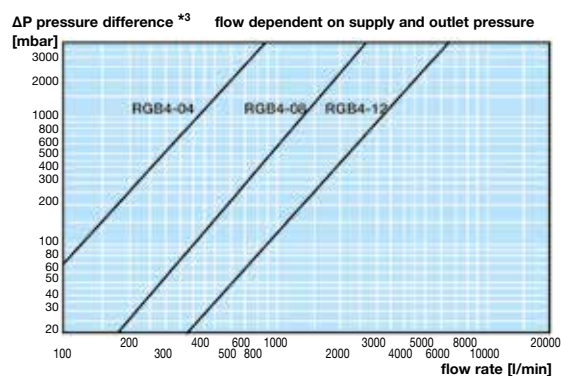
connection thread G $\frac{1}{4}$ for pressure gauge for R $\frac{1}{2}$ " and R1" RGB4-...M

Accessories, enclosed

pressure gauge Ø 63 mm, 0...^{*2} mbar, G $\frac{1}{4}$ MA6302-..^{*2}



RGB4



^{*1} at 4 bar supply pressure and 100 mbar outlet pressure

^{*2} B6 = 0...60 mbar, C2 = 0...160 mbar, C3 = 0...250 mbar, C4 = 0...400 mbar

^{*3} $\Delta P = P_1 - P_2$ difference between supply and outlet pressure

Gauges: see chapter for measuring devices

PDF CAD
www.aircom.net



Order example:
RGB4-04A