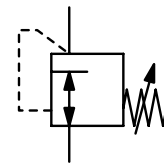


<b>Description</b>	The low pressure regulator is manually adjustable. Version R01-2/-3/-4 has an integrated safety valve which opens at a pressure of 1.5 times of the max. outlet pressure, thus not suitable for gas pressure regulation in closed rooms.		
<b>Media</b>	compressed air, propane, butane or other non-corrosive gases as well as oil		
<b>Supply pressure</b>	max. 16 bar at R01-5/-6, max. 10 bar at R01-2/-3/-4 and RL13-5, max. 6 bar at RL13-0		
<b>Accuracy</b>	at min. supply pressure and flow: < 5% FS pressure deviation at max. supply pressure and flow: < 15% FS pressure deviation at max. supply pressure without flow: < 25% FS pressure deviation		
<b>Air consumption</b>	without constant bleed		
<b>Adjustment</b>	RL13-0: no individual settings R01-5/-6: by adjusting knob a. dial enabling eleven settings for different outlet pressures R01-2/-3/-4 and RL13-5: by T-handle with locknut		
<b>Relieving function</b>	non-relieving		
<b>Gauge port</b>	G $\frac{1}{4}$ on one side of the body, except on R01-5/-6 and RL13-0		
<b>Temperature range</b>	-20 °C to 60 °C / -4 °F to 140 °F		
<b>Material</b>	Body: zinc die-cast	Elastomer: NBR/Buna-N	Inner valve: brass



G $\frac{1}{4}$  up to G $\frac{3}{4}$   
25 ... 50/1400 mbar

Dimensions			Flow rate	Supply pressure	Connection thread	Pressure range	Order number
A	B	ØT					
mm	mm	mm	l/min	empfohlen	G	mbar	

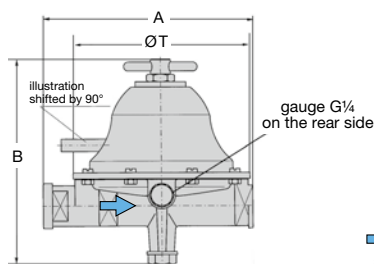
Low pressure regulator			supply pressure max. 16 bar, non-relieving, without gauge port			R01-5/-6	
100	68	68	13	2.5	G $\frac{1}{4}$	25 ... 50	R01-524-00
100	68	68	7	6.0	G $\frac{1}{4}$	20 ... 200	R01-524-05
100	68	68	26	6.0	G $\frac{1}{4}$	70 ... 200	R01-522-01
100	68	68	50	2.5	G $\frac{1}{4}$	30 ... 200	R01-524-06
100	68	68	7	2.5	G $\frac{1}{4}$	20 ... 1400	R01-524-08
103	50	83	40	6.0	G $\frac{3}{8}$ *1	350 ... 1400	R01-626
103	50	83	140	6.0	G $\frac{3}{8}$ *1	350 ... 1400	R01-627

Low pressure regulator			supply pressure max. 10 bar, non-relieving			R01-2/-3/-4	
138	127	117	140	2.5	G $\frac{1}{2}$	20 ... 150	R01-411-01
138	127	117	140	2.5	G $\frac{1}{2}$	20 ... 500	R01-211
160	136	145	280	2.5	G $\frac{3}{4}$ *2	50 ... 500	R01-321

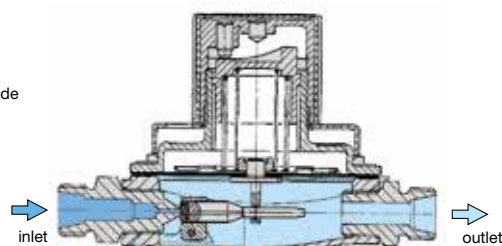
Oil pressure regulator			supply pressure max. 6/10 bar, non-relieving			RL13	
65	32	59	0.3	max. 6	G $\frac{1}{4}$	fest 100	RL13-001
65	70	68	3.0	max. 10	G $\frac{3}{8}$ *1	0 ... 2500	RL13-504

## Accessories, enclosed

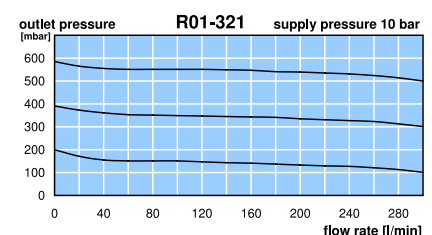
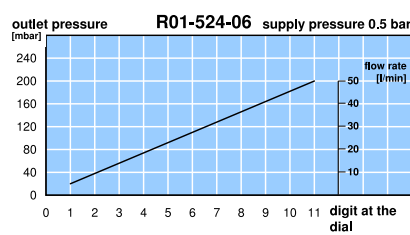
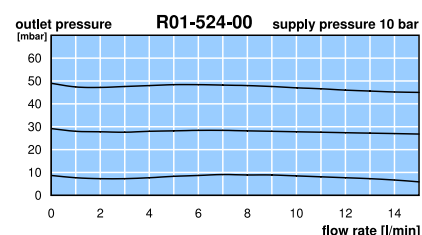
pressure gauge	Ø 50 mm, 0 ... 4 bar,	G $\frac{1}{4}$ , Bourdon tube	for RL13-504	MA5002-04
	Ø 63 mm, 0 ... 250 mbar, G $\frac{1}{4}$ , capsule type		for R01-411-01	MA6302-C3
	Ø 63 mm, 0 ... 0.6 bar, G $\frac{1}{4}$ , Bourdon tube		for R01-2/-3	MA6302-C6



R01-211/-321/-411



cross-section



\*1 G $\frac{1}{4}$  eingangsseitig

\*2 G $\frac{1}{2}$  eingangsseitig

Gauges: see chapter for measuring devices

PDF CAD  
www.aircom.net



Order example:  
R01-524-00