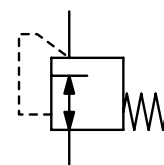


Description	Low pressure regulator with factory-set outlet pressure of 50 mbar and an integrated safety valve, (except for regulator R01-415), thus not for gas pressure regulation in closed rooms.		
Media	compressed air, propane, butane or other non-corrosive gases		
Supply pressure	max. 16 bar at R01-415, R01-310/-405/-406,	max. 2.5 bar bei R01-319/-407/-604/-641	
Accuracy	at max. supply pressure and flow:	< 15 % FS pressure deviation	
	at max. supply pressure without flow:	< 25 % FS pressure deviation	
	at min. supply pressure and flow:	< 5 % FS pressure deviation	
	without constant bleed		
Air consumption			
Relieving function	non-relieving		
Gauge port	G¼ on one side of the body, except on R01-319/-415		
Mounting position	any		
Temperature range	-20 °C to 60 °C / -4 °F to 140 °F		
Material	Body:	zinc die-cast, chrome-plated	Inner valve: brass
	Elastomer:	NBR/Buna-N	



G $\frac{1}{4}$ and G $\frac{1}{2}$
50 mbar

Dimensions			Flow rate		Supply pressure	Connection thread	Outlet pressure	Order number
A	B	ØT	m³/h	l/min	max. bar	G	mbar	
mm	mm	mm						

Low pressure regulator					supply pressure max. 2.5 / 16 bar, non-relieving, 50 mbar factory-set			R01
100	44	86	1.2	20	16	G $\frac{1}{4}$	50	R01-415
138	92	118	3.0	50	2.5	G $\frac{1}{2}$	50	R01-604
138	92	118	4.8	80	2.5	G $\frac{1}{2}$	50	R01-407
138	117	118	9.6	160	2.5	G $\frac{1}{2}$	50	R01-641
160	133	145	19.8	330	2.5	G $\frac{1}{2}$	50	R01-319
138	92	118	3.0	50	16	G $\frac{1}{2}$	50	R01-405
138	92	118	4.8	80	16	G $\frac{1}{2}$	50	R01-406



R01-415



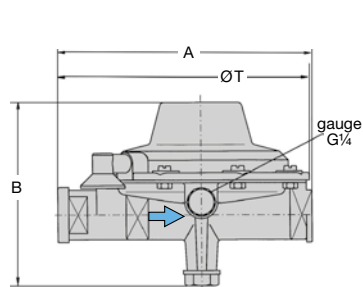
R01-319



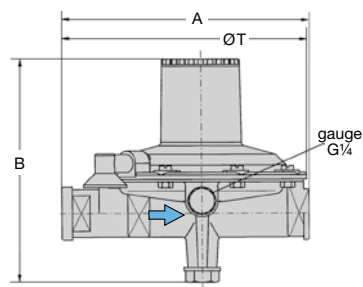
R01-406

Accessories, enclosed

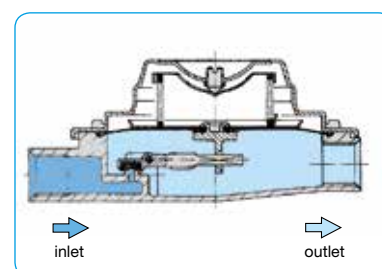
pressure gauge	Ø 63 mm, 0...60 mbar, G $\frac{1}{4}$	not for R01-319/-415	MA6302-B6
----------------	---------------------------------------	----------------------	-----------



R01-405 / -406 / -604



R01-641



cross-section

