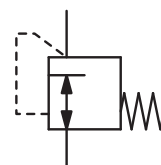


Description	Miniature diaphragm low pressure regulator for extremely low outlet pressures. Maintenance-free.	
Media	compressed air, natural gas, town gas or liquid gas without certificate	
Supply pressure	max. 100 mbar	
Adjustment	After removal of the cap the desired outlet pressure may be set by an adjusting screw.	
Relieving function	non-relieving	
Gauge port	not available	
Mounting position	any	
Temperature range	-15 °C to 80 °C / 5 °F to 176 °F	
Material	Body: aluminium die-cast Elastomer: NBR/Buna-N	Inner valve: steel and aluminium



G¹/₈ up to G³/₈
2.5...9/30 mbar

Dimensions			Nominal size	Flow rate	Supply pressure	Connection thread	Pressure range	Order number
A	B	C	DN	l/min*1	max. mbar	G	mbar	
mm	mm	mm						

Miniature regulator

supply pressure max. 100 mbar,
non-relieving, without constant bleed

R12

43	43	9	6	40	100	G ¹ / ₈	2.5... 9	R12-01A
							7.0... 13	R12-01B
							10... 20	R12-01C
							10... 30	R12-01D
							20... 30	R12-01E
61	54	13	8	100	100	G ¹ / ₄	2.5... 9	R12-02A
							7.0... 13	R12-02B
							10... 20	R12-02C
							10... 30	R12-02D
							20... 30	R12-02E
61	54	13	10	110	100	G ³ / ₈	2.5... 9	R12-03A
							7.0... 13	R12-03B
							10... 20	R12-03C
							10... 30	R12-03D
							20... 30	R12-03E



R12-01A



R12-02D

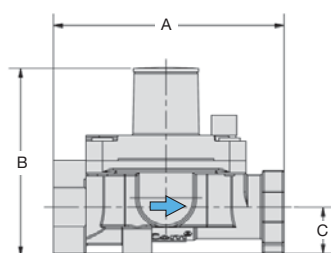
Accessory

pre-pressure regulator

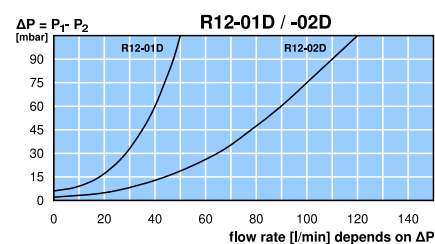
see R900



R12-01A



R12



*1 at 100 mbar supply pressure and 10 mbar outlet pressure