

Description

Good value pressure regulator of solid design. RD1 and RD3 are equipped with diaphragms, RD4 is piston-operated. Wall mounting through two drilled holes in the bodies of RD1 to RD3.

Media

Supply pressure

Adjustment

max. 30 bar
RD1/RD2: by plastic knob with snap-lock
RD3: by handwheel
RD4: by T-handle

Relieving function

relieving, optionally non-relieving

Gauge port

G $\frac{1}{4}$ on both sides of the body, G $\frac{1}{8}$ at RD1

Mounting position

any

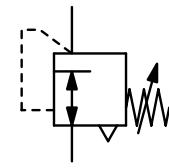
Temperature range

-10 °C to 50 °C / 14 °F to 122 °F for RD1, RD2 and RD4

-20 °C to 60 °C / -4 °F to 140 °F for RD3

Material

Body: zinc die-cast at RD1, aluminium at RD2, RD3 and RD4
Spring cage: plastic reinforced with glass fibre at RD1, nylon at RD2, aluminium at RD3/RD4
Elastomer: NBR/Buna-N Inner valve: brass



G $\frac{1}{4}$ up to G2

| Dimensions | | | K _v -value | Flow rate | | P ₁ max. | Connection thread | Pressure range | Order number |
|------------|----|----|-----------------------|---------------------|---------|---------------------|-------------------|----------------|--------------|
| A | B | C | | m ³ /h*1 | l/min*1 | | | | |
| mm | mm | mm | (m ³ /h) | | | bar | G | bar | |

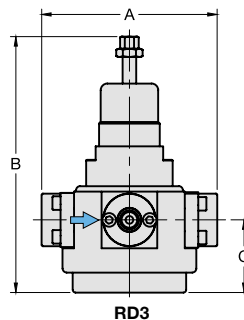
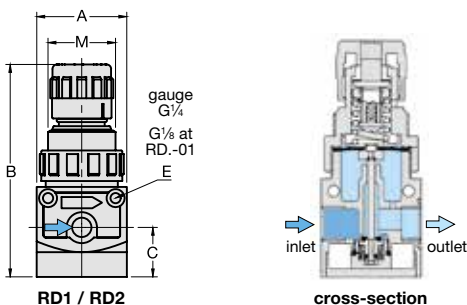
Pressure regulator series „D“

supply pressure max. 20 / 30 bar, relieving, without pressure gauge

RD1...RD4

| | | | | | | | | | |
|-----|-----|----|-----|-----|------|----|------------------|--|--|
| 40 | 95 | 22 | 0.3 | 27 | 450 | 20 | G $\frac{1}{8}$ | 0.2...1.5 0.3...3.0 0.5...8.0 1.5... 15 | RD1-01A RD1-01B RD1-01D RD1-01E |
| 40 | 95 | 22 | 0.3 | 27 | 450 | 20 | G $\frac{1}{4}$ | 0.2...1.5 0.3...3.0 0.5...8.0 1.5... 15 | RD1-02A RD1-02B RD1-02D RD1-02E |
| 64 | 151 | 48 | 1.5 | 108 | 1800 | 20 | G $\frac{3}{8}$ | 0.2...1.5 0.3...3.0 0.5...8.0 1.5... 15 | RD2-03A RD2-03B RD2-03D RD2-03E |
| 64 | 151 | 48 | 1.5 | 108 | 1800 | 20 | G $\frac{1}{2}$ | 0.2...1.5 0.3...3.0 0.5...8.0 1.5... 15 | RD2-04A RD2-04B RD2-04D RD2-04E |
| 130 | 187 | 54 | 3.0 | 195 | 3250 | 30 | G $\frac{3}{4}$ | 0.2...1.5 0.3...3.0 0.5...8.0 1.5... 15 | RD3-06A RD3-06B RD3-06D RD3-06E |
| 130 | 187 | 54 | 3.0 | 195 | 3250 | 30 | G1 | 0.2...1.5 0.3...3.0 0.5...8.0 1.5... 15 | RD3-08A RD3-08B RD3-08D RD3-08E |
| 241 | 187 | 54 | 3.0 | 195 | 3250 | 30 | G1 $\frac{1}{4}$ | 0.2...1.5 0.3...3.0 0.5...8.0 1.5... 15 | RD3-10A RD3-10B RD3-10D RD3-10E |
| 241 | 187 | 54 | 3.0 | 195 | 3250 | 30 | G1 $\frac{1}{2}$ | 0.2...1.5 0.3...3.0 0.5...8.0 1.5... 15 | RD3-1AA RD3-1AB RD3-1AD RD3-1AE |

| series | D | Ø E | M |
|--------|----|-----|---------|
| RD1 | 30 | 4.5 | M30x1,5 |
| RD2 | 51 | 5.5 | M50x1,5 |
| RD3 | 76 | 6.5 | — |
| RD4 | 76 | 8.5 | — |



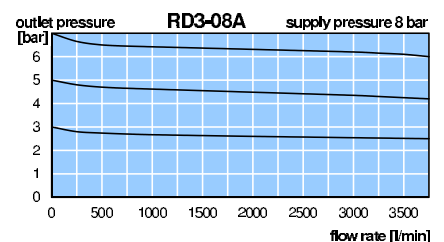
RD1



RD2



RD3-06/-08



*1 at 8 bar supply pressure, 6 bar outlet pressure and 1 bar pressure drop
*2 02 = 0...2.5 bar, 04 = 0...4 bar, 10 = 0...10 bar, 16 = 0...16 bar

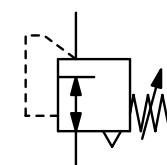
Gauges: see chapter for measuring devices

PDF CAD
www.aircom.net



Order example:
RD1-01A

| | |
|---------------------------|---|
| Description | Good value pressure regulator of solid design. RD1 and RD3 are equipped with diaphragms, RD4 is piston-operated. Wall mounting through two drilled holes in the bodies of RD1 to RD3. |
| Media | compressed air or non-corrosive gases |
| Supply pressure | max. 30 bar |
| Adjustment | RD1/RD2: by plastic knob with snap-lock RD3: by handwheel RD4: by T-handle |
| Relieving function | relieving, optionally non-relieving |
| Gauge port | G $\frac{1}{4}$ on both sides of the body, G $\frac{1}{8}$ at RD1 |
| Mounting position | any |
| Temperature range | -10 °C to 50 °C / 14 °F to 122 °F for RD1, RD2 and RD4 -20 °C to 60 °C / -4 °F to 140 °F for RD3 |
| Material | Body: zinc die-cast at RD1, aluminium at RD2, RD3 and RD4 Spring cage: plastic reinforced with glass fibre at RD1, nylon at RD2, aluminium at RD3/RD4 Elastomer: NBR/Buna-N Inner valve: brass |



G $\frac{1}{4}$ up to G2

Standard

2

| Dimensions | | | K _v -value | Flow rate | | P ₁ max. | Connection thread | Pressure range | Order number |
|------------|----|----|-----------------------|--------------------|--------|---------------------|-------------------|----------------|--------------|
| A | B | C | | m ³ /h* | l/min* | | | | |
| mm | mm | mm | (m ³ /h) | m ³ /h* | l/min* | bar | G | bar | |

Pressure regulator series „D“ supply pressure max. 20 / 30 bar, relieving, without pressure gauge RD1...RD4

| | | | | | | | | | |
|-----|-----|-----|------|------|--------|----|-----------------|-----------|---------|
| 215 | 385 | 130 | 18.6 | 1320 | 22 000 | 30 | G $\frac{1}{2}$ | 0.2...1.5 | RD4-12A |
| | | | | | | | | 0.3...3.0 | RD4-12B |
| | | | | | | | | 0.5...8.0 | RD4-12D |
| | | | | | | | | 1.5... 15 | RD4-12E |
| 215 | 385 | 130 | 18.6 | 1320 | 22 000 | 30 | G2 | 0.2...1.5 | RD4-16A |
| | | | | | | | | 0.3...3.0 | RD4-16B |
| | | | | | | | | 0.5...8.0 | RD4-16D |
| | | | | | | | | 1.5... 15 | RD4-16E |



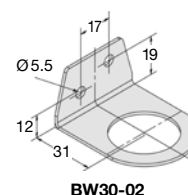
RD4
accessory: gauge

Special options, add the appropriate letter

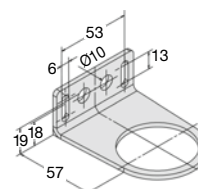
| | | |
|---------------------------|----------------------------|--------------|
| non-relieving | without relieving function | RD K |
| 30 bar operating pressure | | RD H |

Accessories, enclosed

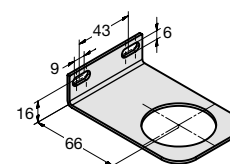
| | | | |
|------------------|--|-----------------|-------------------------|
| pressure gauge | Ø 40 mm, 0... ^{*2} bar, G $\frac{1}{8}$ | for RD1 | MA4001-.. ^{*2} |
| | Ø 50 mm, 0... ^{*2} bar, G $\frac{1}{4}$ | for RD2 | MA5002-.. ^{*2} |
| | Ø 63 mm, 0... ^{*2} bar, G $\frac{1}{4}$ | for RD3 and RD4 | MA6302-.. ^{*2} |
| mounting bracket | made of steel | for RD1 | BW30-02 |
| mounting nut | made of plastic | for RD1 | M30x1,5K |
| mounting bracket | made of steel | for RD2 | BW50-03 |
| mounting nut | made of plastic | for RD2 | M50x1,5K |
| mounting bracket | made of stainless steel | for RD3 | BW45-03S |
| mounting nut | made of stainless steel | for RD3 | BW45-03S |



BW30-02

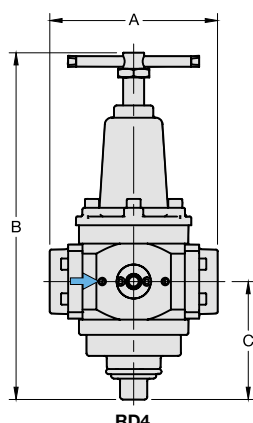


BW50-03

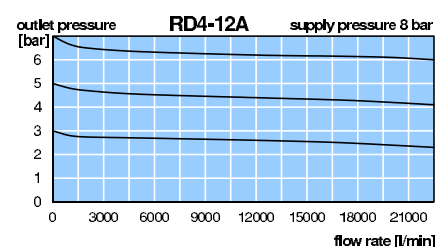


BW45-03S

| series | D | Ø E | M |
|--------|----|-----|---------|
| RD1 | 30 | 4.5 | M30x1,5 |
| RD2 | 51 | 5.5 | M50x1,5 |
| RD3 | 76 | 6.5 | — |
| RD4 | 76 | 8.5 | — |



RD4



*1 at 8 bar supply pressure, 6 bar outlet pressure and 1 bar pressure drop
*2 02 = 0...2.5 bar, 04 = 0...4 bar, 10 = 0...10 bar, 16 = 0...16 bar