

Description	Piston-operated regulator with balanced valve design and high-relief flow. Features include a transparent pressure-calibrated, non-rising adjusting dial which can be mounted in any position so the dial face is always visible. Pressure setting in steps is possible.		
Media	compressed air		
Supply pressure	max. 21 bar, minimum 1 bar above outlet pressure		
Air consumption	R21/R31/R41: max. 1.4 l/min depending on outlet pressure R11: without constant bleed		
Adjustment	The full secondary pressure range can be dialed in less than a 270° turn proportional to handwheel with scale in bar or psi. This is advantageous if secondary pressure must be changed frequently.		
Relieving function	relieving		
Gauge port	G¼ on both sides of the body, not available at R11		
Mounting position	any		
Temperature range	0 °C to 65 °C / 32 °F to 149 °F		
Material	Body: zinc die-cast	Piston: acetal	Valve seat: acetal, brass and NBR/Buna-N
	O-ring: NBR/Buna-N		

G¼ up to G2
fast adjustment

Dimensions			K _v - value (m³/h)	Flow rate		Connection thread G	Pressure range bar	Order number
A	B	C		m³/h*1	l/min*1			
mm	mm	mm						

Adjustment dial regulator

supply pressure max. 21 bar, relieving,
with constant bleed, adjusting dial 270° turn wheel

R11...R41

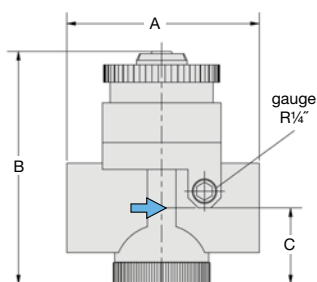
66	71	10	0.02	1.2	20	G¼	0... 3 0... 11	R11-C2-L R11-C2-O
81	104	24	2.5	180	3000	G¼	0... 3 0... 11	R21-C2-L R21-C2-O
81	104	24	3.8	270	4500	G¾	0... 3 0... 11	R21-C3-L R21-C3-O
81	104	43	4.2	300	5000	G½	0... 3 0... 11	R21-C4-L R21-C4-O
109	132	43	6.8	480	8000	G¾	0... 3 0... 11	R31-C6-L R31-C6-O
109	132	43	7.6	540	9000	G1	0... 3 0... 11	R31-C8-L R31-C8-O
135	173	71	18.5	1320	22000	G1½	0... 3 0... 11	R41-CB-L R41-CB-O
135	173	71	20.0	1440	24000	G2	0... 3 0... 11	R41-CC-L R41-CC-O

Special options, add the appropriate letter

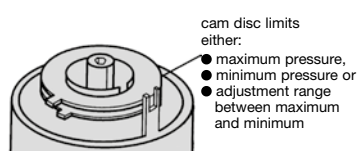
adjustment lock RRP-95-585 R.1-C . - T

Accessories, enclosed

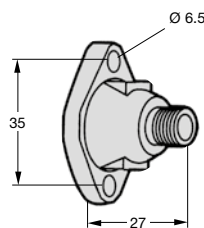
pressure gauge Ø 50 mm, 0...*2 bar, G¼ for R21 to R41 MA5002-..*2
mounting bracket mounting through the gauge port at the back for R21 to R41 RRP-95-590



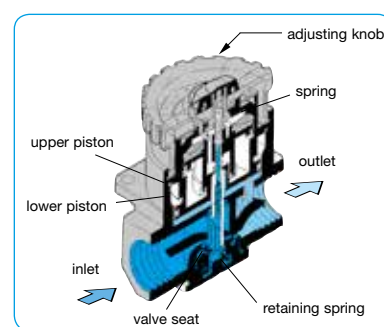
R11...R41



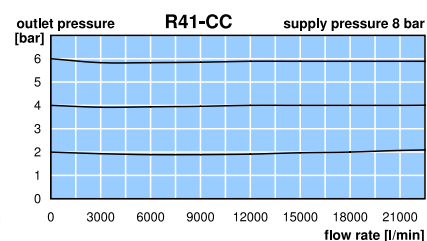
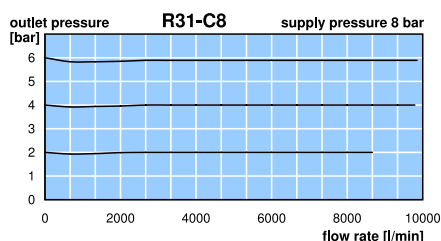
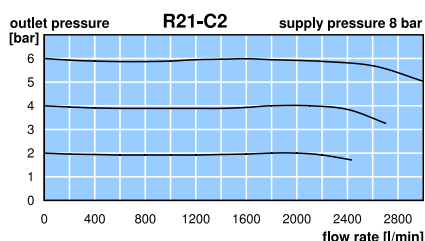
adjustment lock
RRP-95-585



mounting bracket
RRP-95-590



cross-section



*1 at 8 bar supply pressure, 6 bar outlet pressure and 1 bar pressure drop
*2 04 = 0...4 bar, 16 = 0...16 bar

Gauges: see chapter for measuring devices

PDF CAD
www.aircom.net

Order example:
R11-C2-L