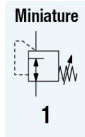
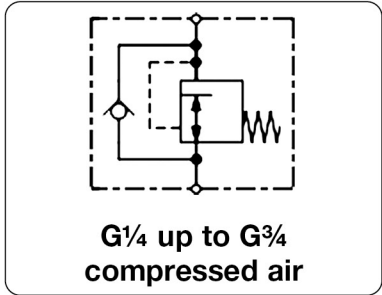


<b>Description</b>	In-line pressure regulator with factory-set outlet pressure, reducing from e.g. 15 bar to 6 bar. With an outlet pressure tolerance of only ±10% <sup>2</sup> it is especially suitable for nailing machines.
<b>Benefits</b>	<ul style="list-style-type: none"> <li>• Higher safety through lower pressure. Tools and equipment protected against pressure damages.</li> <li>• Cost reduction through substantially reduced air consumption. Longer service life.</li> <li>• Noise reduction for tools.</li> </ul>
<b>Media</b>	compressed air or non-corrosive gases
<b>Supply pressure</b>	max. 25 bar
<b>Adjustment</b>	Select the pressure regulator according to the desired outlet pressure. The outlet pressure cannot be subsequently adjusted. This safeguards against tampering.
<b>Relieving function</b>	relieving at removal of supply pressure
<b>Temperature range</b>	0 °C to 80 °C / 32 °F to 176 °F
<b>Material</b>	Body: aluminium Elastomer: NBR/Buna-N



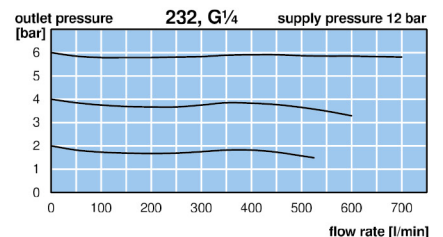
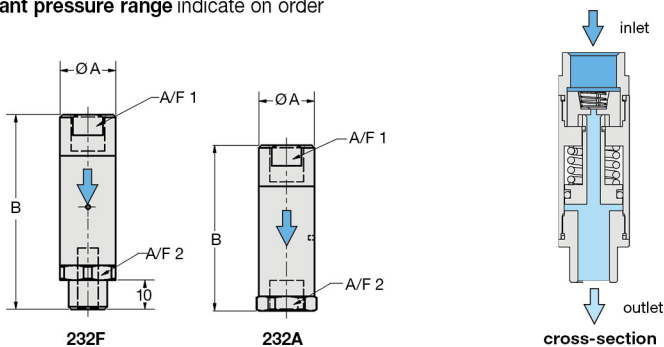
Dimensions				Flow rate	Supply pressure	Connection thread	Outlet pressure	Order number
ØA	B	A/F 1	A/F 2					
mm	mm	mm	mm	l/min*1	max. bar	G	bar*2	

Regulator with relieving function				P: max. 25 bar, accuracy*2, aluminium		232		
19	69	16	19	500	25	G <sup>1</sup> / <sub>4</sub> ia	2	232F0220
							3	232F0230
							4	232F0240
							5	232F0250
							6	232F0260
							7	232F0270
							8	232F0280
							19	59
3	232A0230							
4	232A0240							
5	232A0250							
6	232A0260							
7	232A0270							
8	232A0280							
25	63	22	25	1400	25	G <sup>3</sup> / <sub>8</sub>		
							3	232A0330
							4	232A0340
							5	232A0350
							6	232A0360
							7	232A0370
							8	232A0380
							30	68
3	232A0430							
4	232A0440							
5	232A0450							
6	232A0460							
7	232A0470							
8	232A0480							
40	102	34	40	2500	25	G <sup>3</sup> / <sub>4</sub>		
							4	232A0540
							6	232A0560
							8	232A0580



### Special options, add the appropriate letter

- NPT** connection thread 232. 1 . . .
- deviant pressure range** indicate on order 232. . . X X



\*1 P<sub>s</sub> = 12 bar; Δp = 0.5 bar  
\*2 Tolerance: < 4 bar ± 0.3 bar (air, P<sub>s</sub> = 6 bar, 10 Nl/min)  
≥ 4 bar ± 10% (air, P<sub>s</sub> = 10 bar, 10 Nl/min)

\* Product group

PDF CAD  
www.aircom.net

Order example:  
232F0220