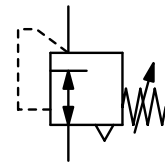
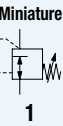


Description	Miniature pressure regulator with unique modular dovetail design allowing its individual use or assembly into a modular combination of pneumatic components through connector slides.	
Identification marking	The item no. includes a four-digit number starting with the input port and continuing counterclockwise. The digit corresponds with the type of connector slide, e.g. 1 for G $\frac{1}{8}$, 2 for G $\frac{1}{4}$ or B for blank.	
Pressure regulator R7	Designed for precise regulation of pressure. The regulator possesses a 20 turn adjustment range and excellent repeatability. The valve seat is protected by a filter/strainer at the input port.	
Media	5 μ m filtered compressed air and non-corrosive gases	
Accuracy	at supply pressure variation of 1 bar: at supply pressure removal/reapplication: at variations in temperature of 25 °C / K:	Supply pressure max. 10 bar < 10 mbar pressure deviation < 10 mbar pressure deviation < 10 mbar pressure deviation
Air consumption	0.3 l/min at 7 bar supply pressure	Adjustment by knob
Relieving function	relieving	Mounting position any
Gauge port	G $\frac{1}{8}$ via threaded slide	



M5, G $\frac{1}{8}$, G $\frac{1}{4}$ or quick connector



Dimensions			Flow rate l/min*1	Supply pressure max. bar	Connection thread G	Pressure range bar	Order number
A	B	C					
mm	mm	mm					

Precision regulator

with adjusting knob, relieving, gauge port G $\frac{1}{8}$ on one side							
47	92	14	140	10	G $\frac{1}{8}$	0.01...0.7 0.02...2.1 0.03...4.1 0.03...7.0	R7-010-111B R7-030-111B R7-060-111B R7-100-111B
with adjusting knob, relieving, gauge port G $\frac{1}{4}$ on one side							
51	92	14	140	10	G $\frac{1}{4}$	0.01...0.7 0.02...2.1 0.03...4.1 0.03...7.0	R7-010-212B R7-030-212B R7-060-212B R7-100-212B

Special options, add the appropriate letter or number

with spindle	screwdriver adjustment, height 77 mm		R....S
thread	M5	connection thread	R....S...
	G$\frac{1}{8}$		R....1...
	G$\frac{1}{4}$		R....2...
quick connector	Ø 4	external diameter of hose	R....4...
	Ø 6		R....6...
	Ø 8		R....8...
breech plate			R....B...
connection plate		with permanent pressure supply	R....U...
		without passage, modular combination of two devices	R....C...
wall mounting		at breech plate	R....W...

Accessories, enclosed

pressure gauge	Ø 23 mm, 0... ^{*2} bar, G $\frac{1}{8}$	MA2301-...^{*2}
-----------------------	--	--------------------------------



R7-...-1B1B, G $\frac{1}{8}$



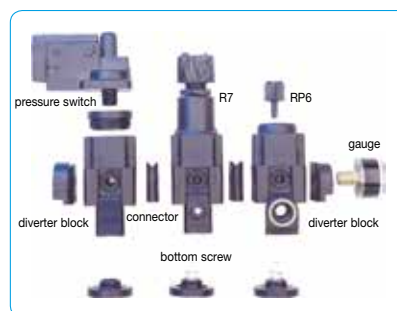
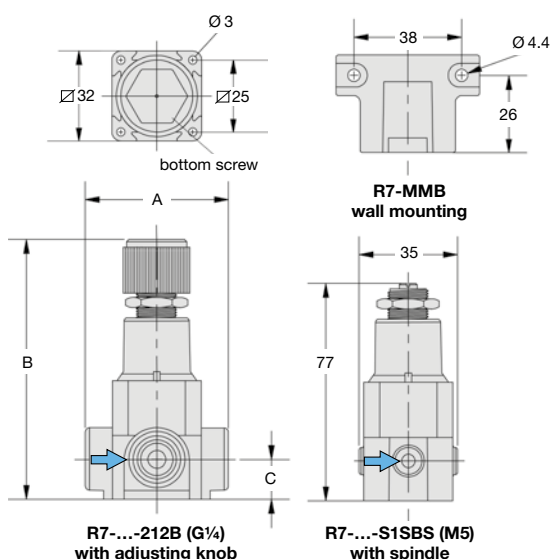
R7-...-2B2BS, G $\frac{1}{4}$



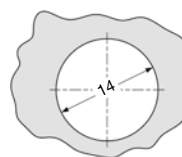
R7-...-SBSBS with spindle, M5 **R7-...-4B4B w/ quick connector Ø 4**



example for assembly



example for assembly



panel cut-out

*1 at 7 bar supply pressure, 6 bar outlet pressure and 1 bar pressure drop
*2 04 = 0...4 bar, 06 = 0...6 bar, 10 = 0...10 bar

